

# 4 + n

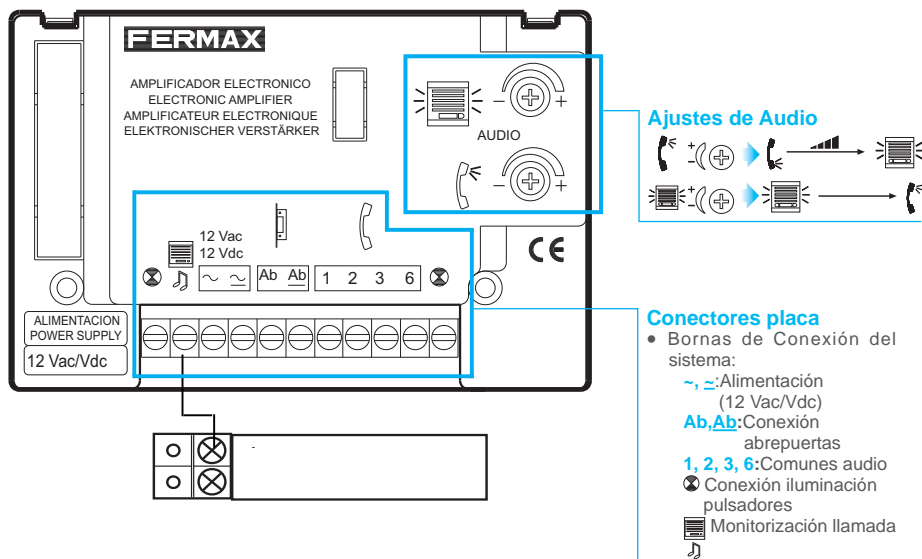
**FERMAX**

KIT AUDIO 1-24 LÍNEAS CITYCLASSIC 4+n  
CITYCLASSIC 4+N 1 - 24 WAYS AUDIO KIT  
KIT AUDIO 1 - 24 LIGNES CITYCLASSIC 4+N  
AUDIO-KIT 1 - 24 WE CITYCLASSIC 4+N  
KIT DE ÁUDIO 1 - 24 LINHAS CITYCLASSIC 4+n

GUÍA INICIO RÁPIDA  
QUICK START GUIDE  
GUIDE DE MISE EN MARCHÉ RAPIDE  
SCHNELLSTARTANLEITUNG  
GUIA DE INICIAÇÃO RÁPIDA



## CONECTORES PLACA



## CARACTERÍSTICAS TÉCNICAS

### PLACA

<b>Alimentación</b>	12 Vac / 12 Vdc
<b>Consumo</b>	
en reposo	40 mA
audio activo	250 mA
iluminación por módulo de pulsadores	70 mA
<b>Temperatura de funcionamiento</b>	[0 , +60 °C] / [32 , +140 °F]
<b>Potencia audio sentido vivienda-calle</b>	1W
<b>Potencia audio sentido calle-vivienda</b>	0,15 W
<b>Volumen regulable en ambos sentidos</b>	

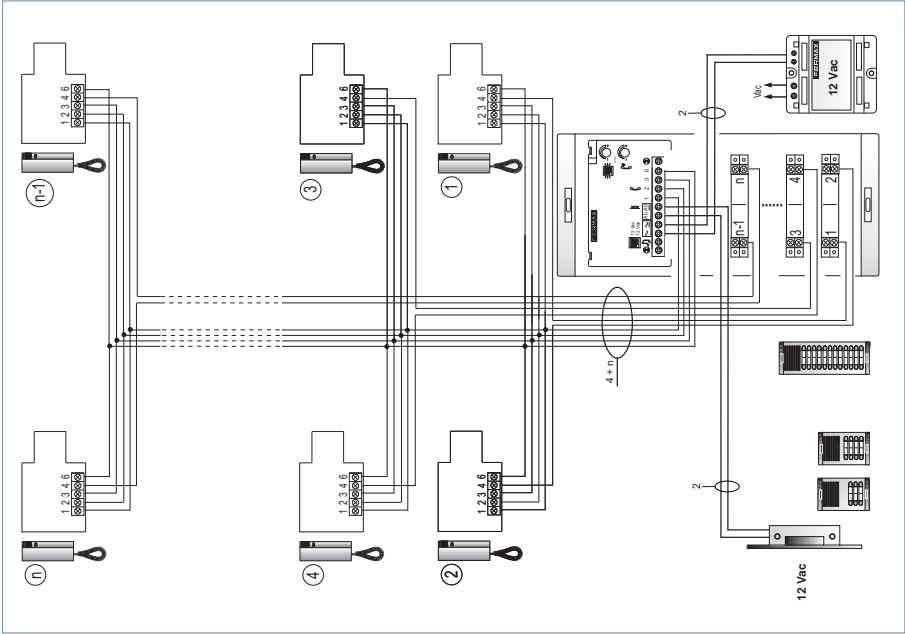
### TELÉFONO

<b>Temperatura de funcionamiento</b>	[5, +40°C] / [41, +104°F]
<b>Llamada Electrónica</b>	8 , 12 Vpp
<b>Altavoz</b>	1.75" 16 W
<b>Micrófono: Electret - Resist. dinámica 50</b>	

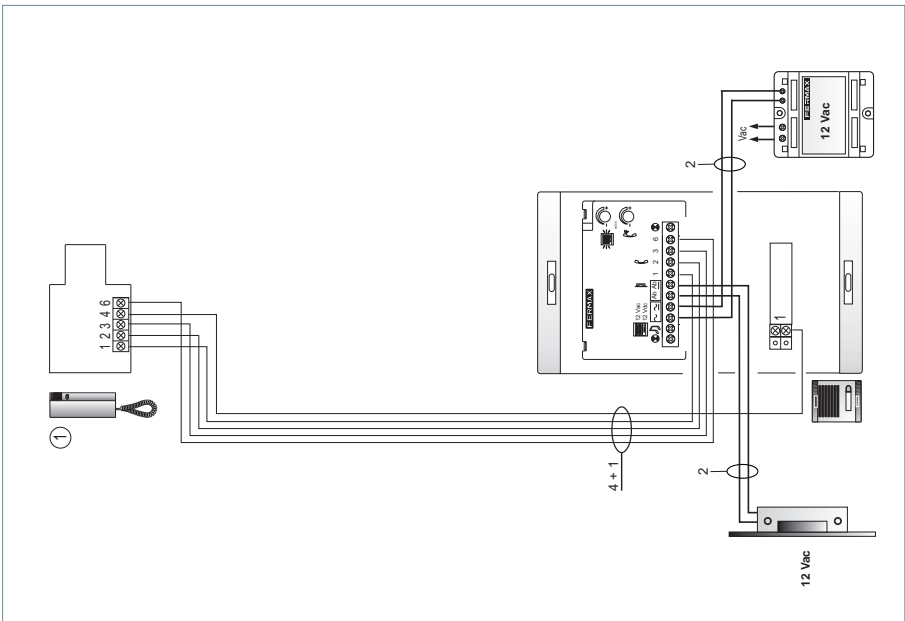


ESQUEMA DE CABLEADO

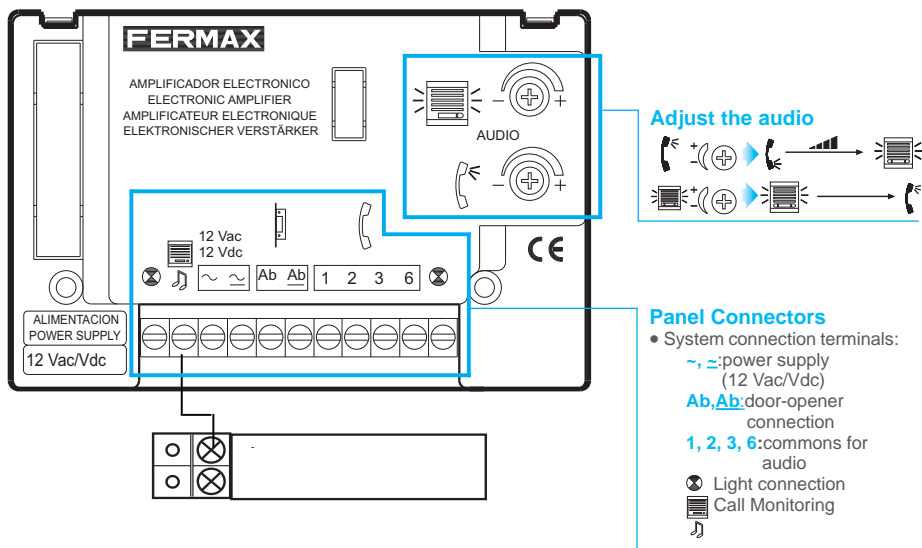
ESQUEMA DE CABLEADO KIT 2L - 24L



ESQUEMA DE CABLEADO KIT 1L



## PANEL CONNECTORS



## TECHNICAL FEATURES

### OUTDOOR PANEL

<b>Power Supply</b>	12 Vac / 12 Vdc
<b>Consumption</b>	
in standby	40 mA
audio active	250 mA
lighting	70 mA
<b>Temperatura de funcionamiento</b>	[0 , +60 °C] / [32 , +140 °F]
<b>Audio power from the apartment to the panel</b>	1W
<b>Audio power from the panel to the apartment</b>	0,15 W
<b>Adjustable volume both ways</b>	

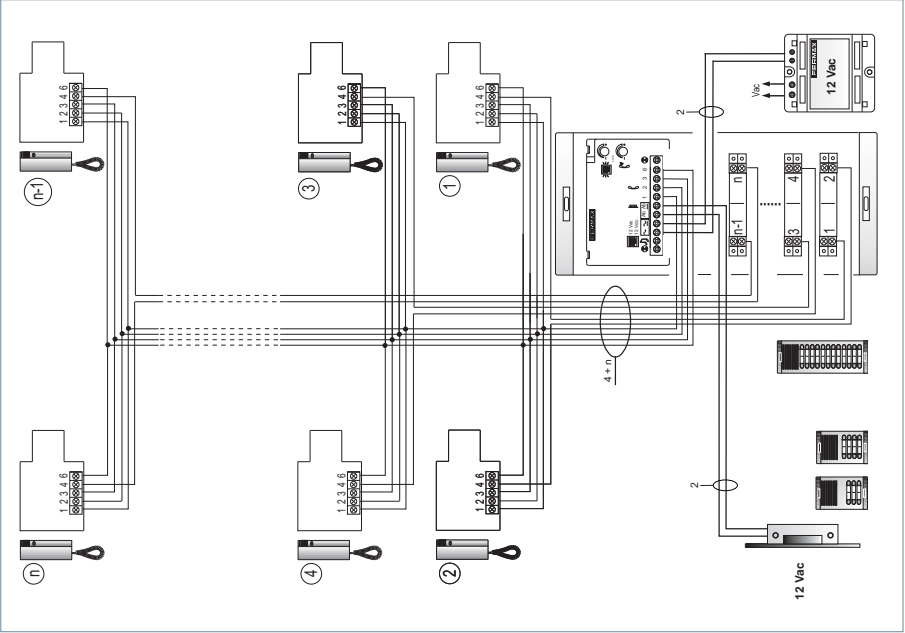
### TELEPHONE

<b>Operating Temperature</b>	[5, +40°C] / [41, +104°F]
<b>Electronic call</b>	8 , 12 Vpp
<b>Speaker</b>	1.75" 16 W
<b>Microphone: Electret. Dinamic Resistance 50</b>	

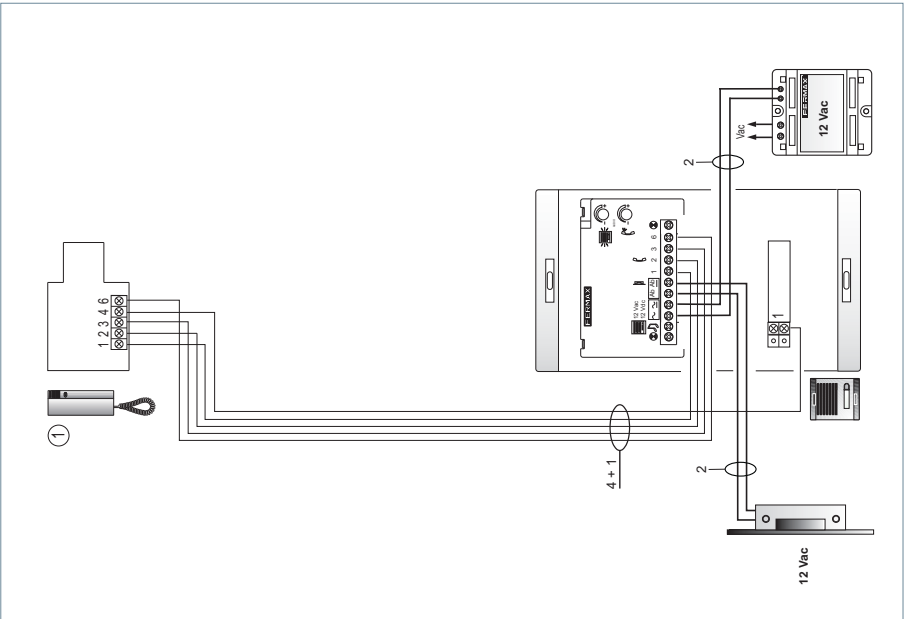


WIRING DIAGRAM

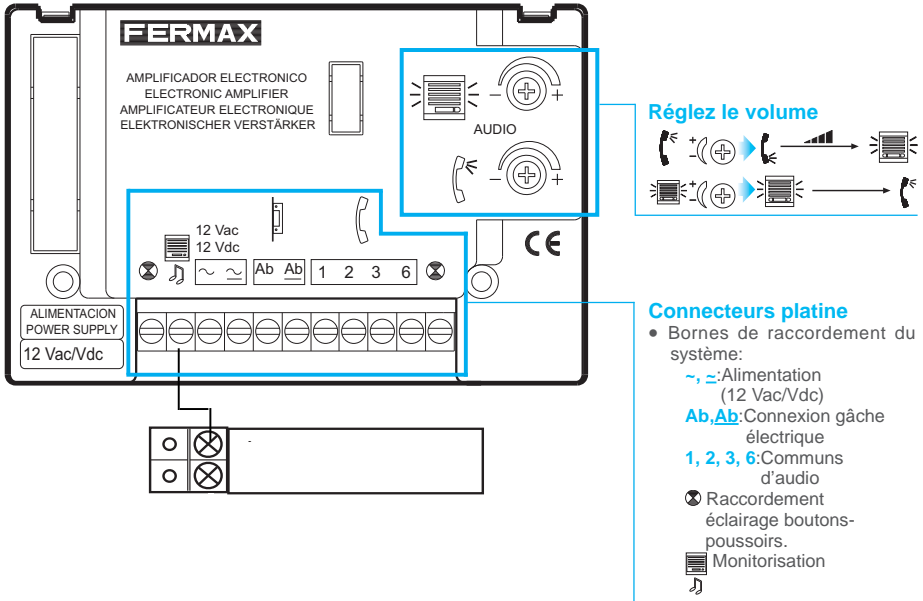
WIRING DIAGRAM KIT 2L - 24L



WIRING DIAGRAM KIT 1L



## CONNECTEURS PLATINE



## CARACTERISTIQUES TECHNIQUES

### PLATINE

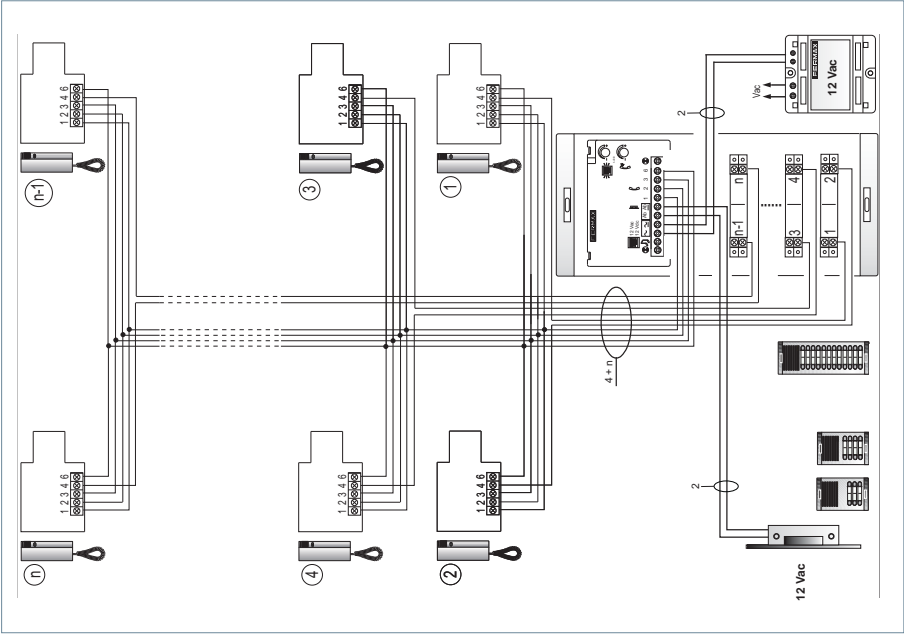
Alimentation	12 Vac / 12 Vdc
Consommation	
au repos	40 mA
avec audio	250 mA
éclairage	70 mA
Température de fonctionnement	[0 , +60 °C] / [32 , +140 °F]
Piissance de l'audio sens poste-platine	1W
Piissance de l'audio sens platine-poste	0,15 W
Volume réglable dans les deux sens	

### POSTE

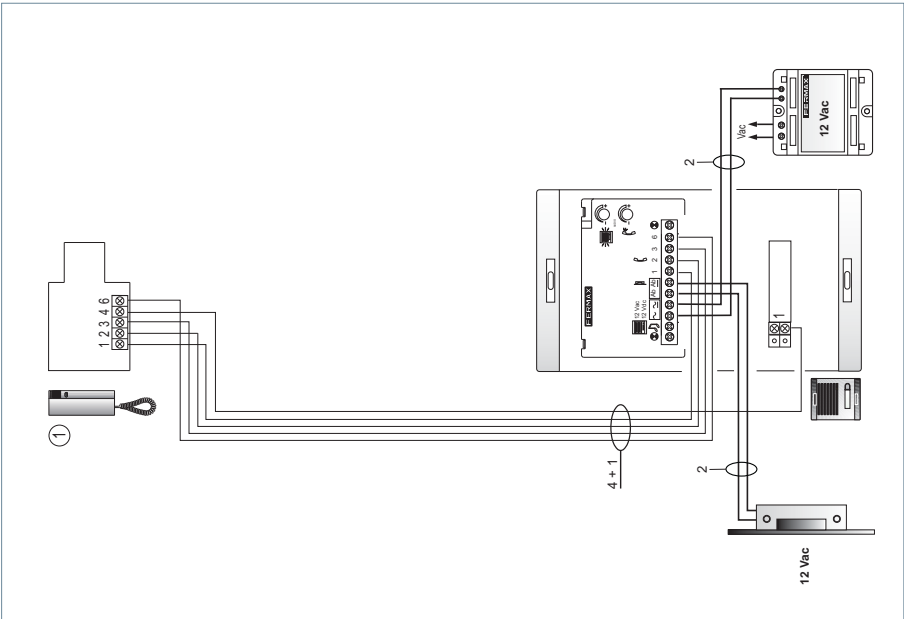
Température de fonctionnement	[5, +40°C] / [41, +104°F]
Appel électronique	8 , 12 Vpp
Haut-parleur	1.75" 16 W
Micrófono: Electret. Résistance dynamique 50	

 SCHEMA DE CABLAGE

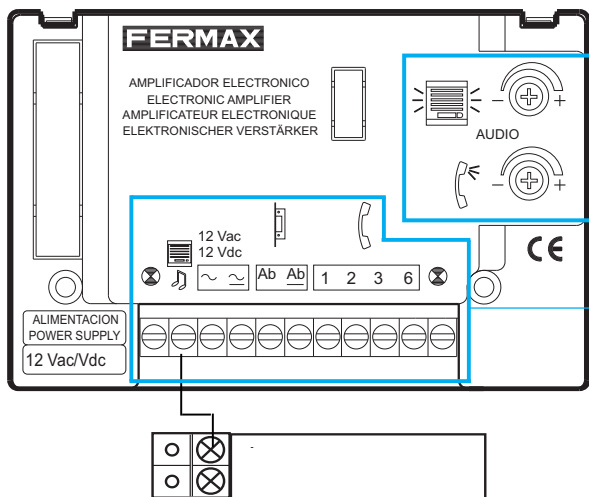
SCHEMA DE CABLAGE KIT 2L - 24L



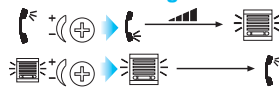
SCHEMA DE CABLAGE KIT 1L



# ANSCHLÜSSE TÜRSTATION



## Audioeinstellung



## Anschlüsse Türstation

- Anschlussklemmen des Systems:
  - ~, -: Stromversorgung (12 Vac/Vdc)
  - Ab, Ab: Verbindung Türöffner
  - 1, 2, 3, 6: gemeinsame Anschluss
  - ⊗: Hintergrundbeleuchtung Tasten
  - 🎵: Kontrollabhören

## TECHNISCHE EIGENSCHAFTEN

### TÜRSTATION

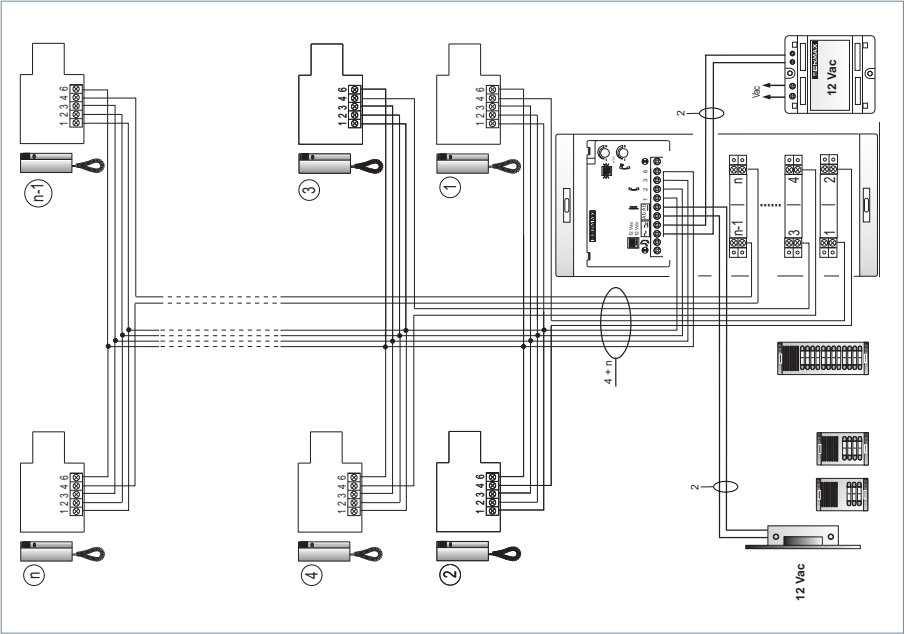
<b>Stromversorgung</b>	12 Vac / 12 Vdc
<b>Stromverbrauch</b>	
Im Bereitschaftsmodus	40 mA
Betriebszustand Audio	250 mA
Beleuchtung vom Tastermodul	70 mA
<b>Betriebstemperatur</b>	[0 , +60 °C] / [32 , +140 °F]
<b>Audio-Leistung in Richtung Türstation</b>	1W
<b>Audio-Leistung in Richtung Telefon</b>	0,15 W
<b>Regulierbare Lautstärke in beiden Richtungen</b>	

### TELEFONS

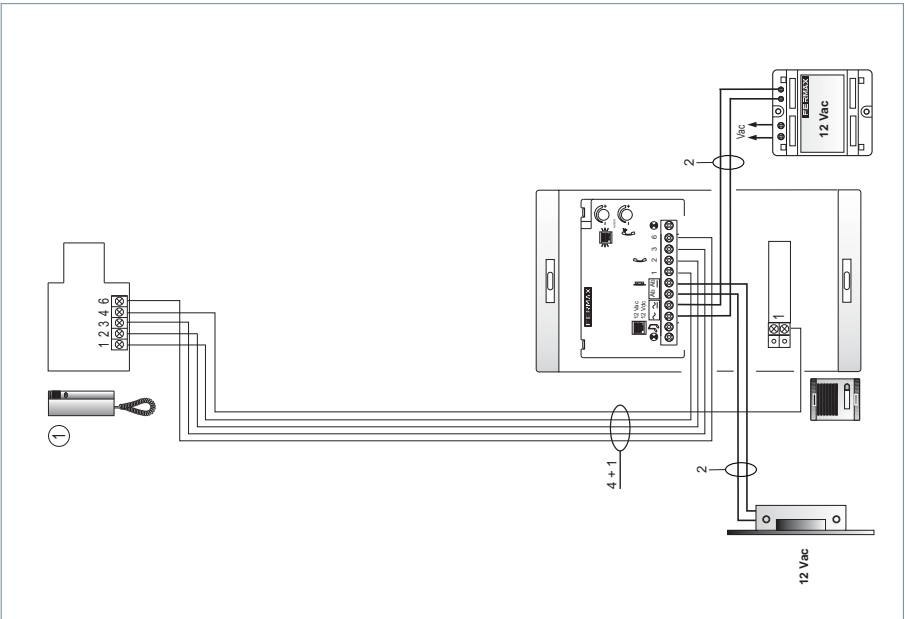
<b>Betriebstemperatur</b>	[5, +40°C] / [41, +104°F]
<b>Elektronischer Rufton</b>	8 , 12 Vpp
<b>Lautsprecher</b>	1.75" 16 W
<b>Mikrophon: Electret. Dynamischer Widerstand 50</b>	



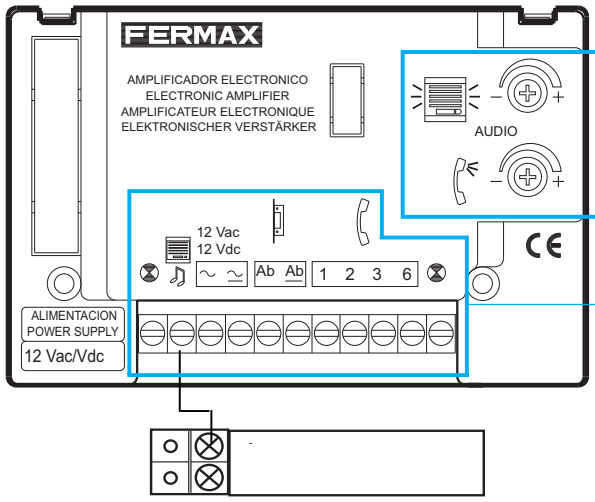
VERKABELUNGSSCHEMA KIT 2L - 24L



VERKABELUNGSSCHEMA KIT 1L



# CONECTORES DA PLACA



- Conectores Placa**
- Terminais de ligação do vsistema:
  - ~, ~: alimentação (12 Vac/Vdc)
  - Ab, Ab: ligação do trinco
  - 1, 2, 3, 6: comuns de áudio
  - ☉ Ligação iluminação botões
  - 🎵 Monitorização da chamada

# CARACTERÍSTICAS TÉCNICAS

## PLACA

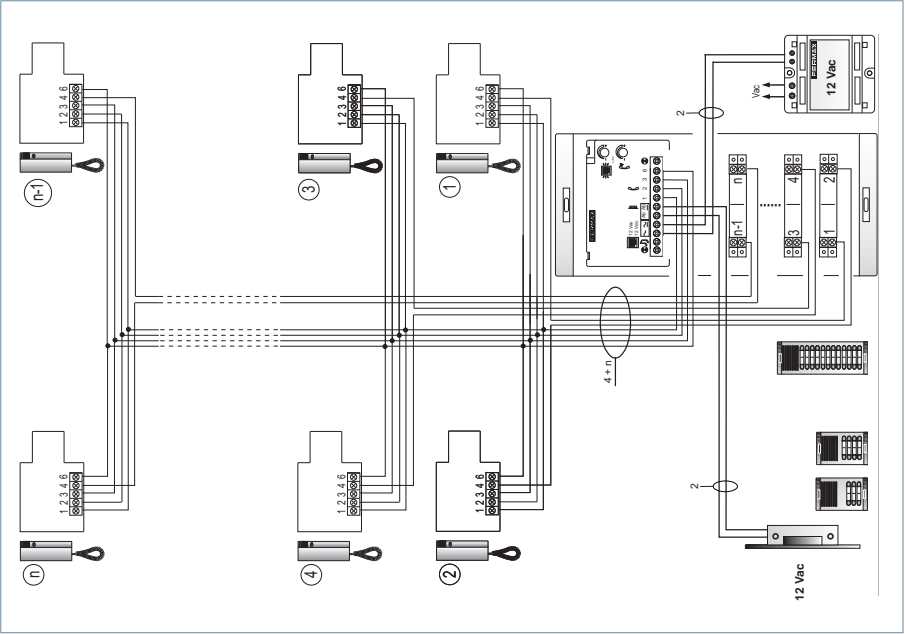
<b>Alimentação</b>	12 Vac / 12 Vdc
<b>Consumo</b>	
em repouso	40 mA
áudio activo	250 mA
iluminação	70 mA
<b>Temperatura de funcionamento</b>	[0 , +60 °C] / [32 , +140 °F]
<b>Potência áudio sentido rua</b>	1W
<b>Potência áudio sentido telefone</b>	0,15 W
<b>Volume regulável em ambos sentidos</b>	

## TELEFONE

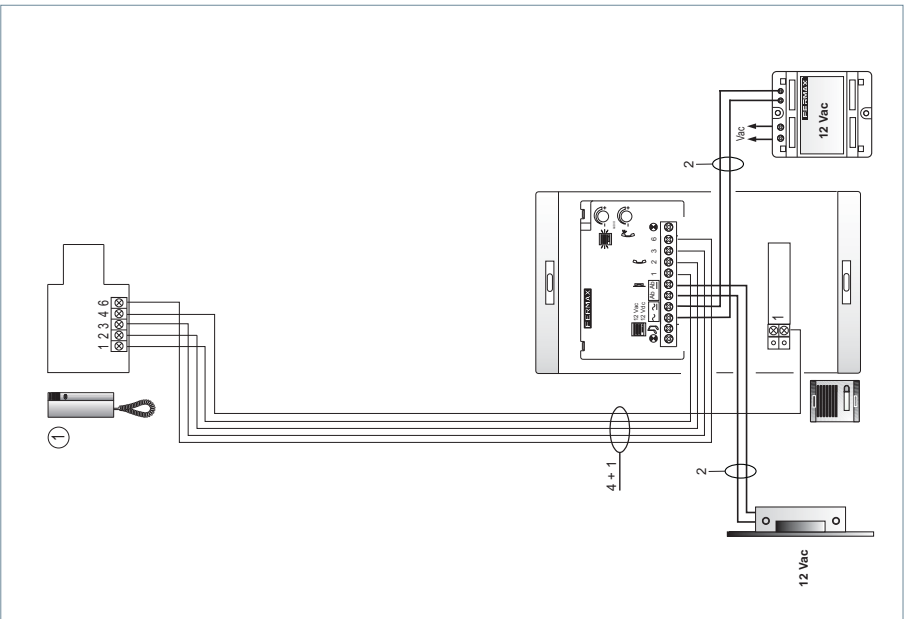
<b>Temperatura de funcionamento</b>	[5, +40°C] / [41, +104°F]
<b>Chamada Eletrónica</b>	8 , 12 Vpp
<b>Altifalante</b>	1.75" 16 W
<b>Microfone: Electret - Resistência Dinâmica 50</b>	

**ESQUEMA DE INSTALAÇÃO**

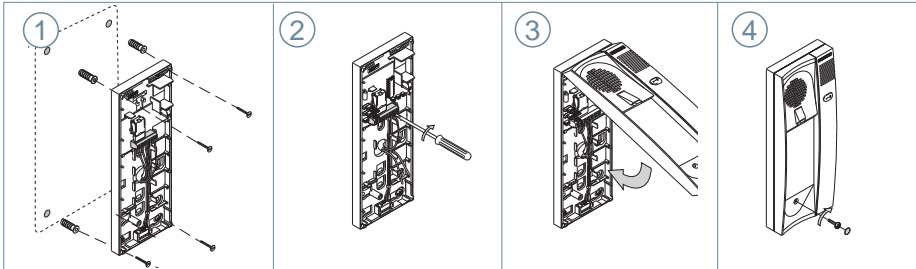
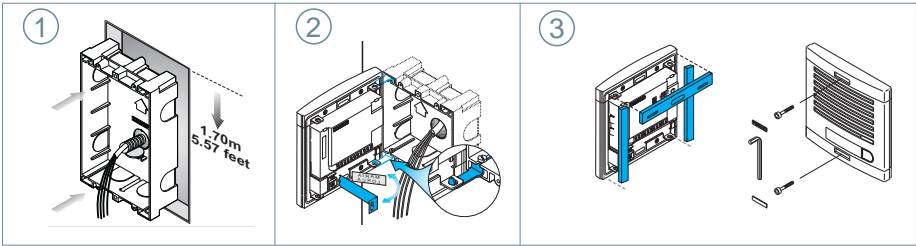
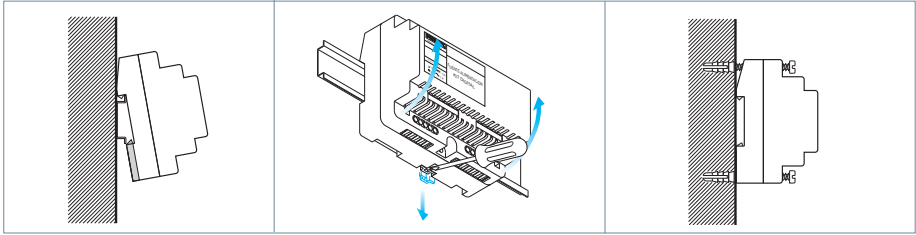
**ESQUEMA DE INSTALAÇÃO KIT 2L - 24L**



**ESQUEMA DE INSTALAÇÃO KIT 1L**



**✕ INSTALACIÓN / INSTALLATION / INSTALLATION / INSTALLATION / INSTALAÇÃO**



**⚙️ TABLA DE DISTANCIAS / DISTANCES TABLE / TABLEU DISTANCECES / ABSTANDSTABELLE / TABELA DE DISTÂNCIAS**

metros / metres	pies / feet	mm <sup>2</sup>	AWG	mm <sup>2</sup>	AWG
0 - 300	0 - 900	0.5	20	1	17
300 - 500	900 - 1500	1	17	1	17