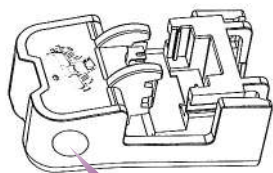




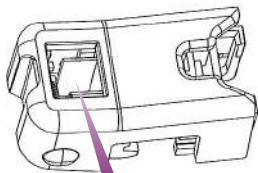
90º



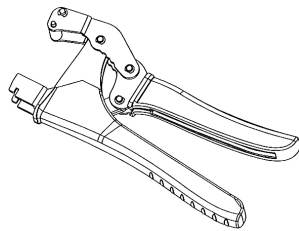
180º



Botón

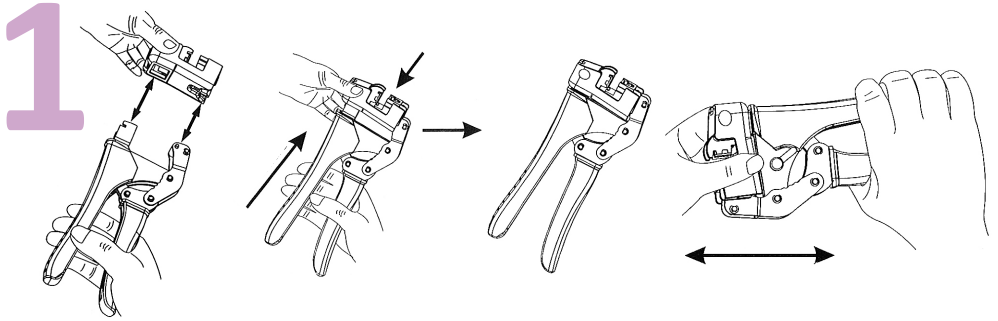


Ranura de guía



Cuerpo herramienta

Cantidad	Elementos incluidos
1	Cuerpo.
1	Zócalo 180º.
1	Zócalo 90º.
1	Estuche para guardar.

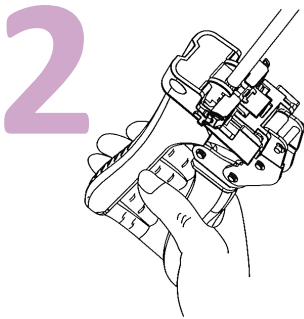
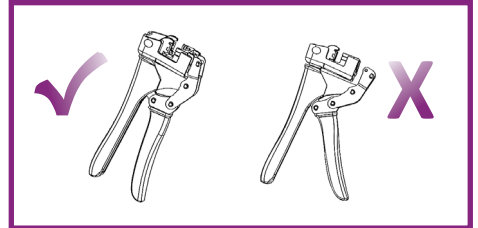


Colocación del zócalo:

Inserte la ranura guía en el cuerpo de la herramienta, tal como se vé en el dibujo.

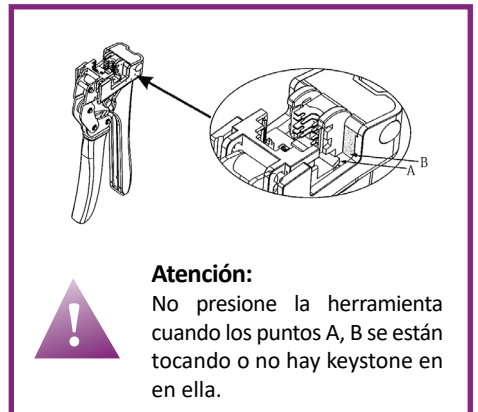
Presione el botón a ambos lados y fije bien hasta el final.

Asegúrese de que el zócalo está bien sujeto, muévalo para ello.

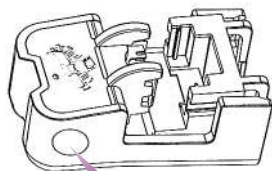


Instalación:

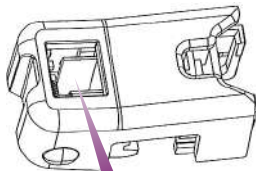
Instale los cables y colóquelos de forma segura en su lugar correspondiente en el keystone, luego introduzca lo en la herramienta y presione.



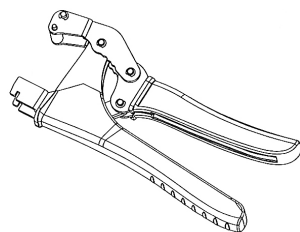
ENGLISH VERSION



Button

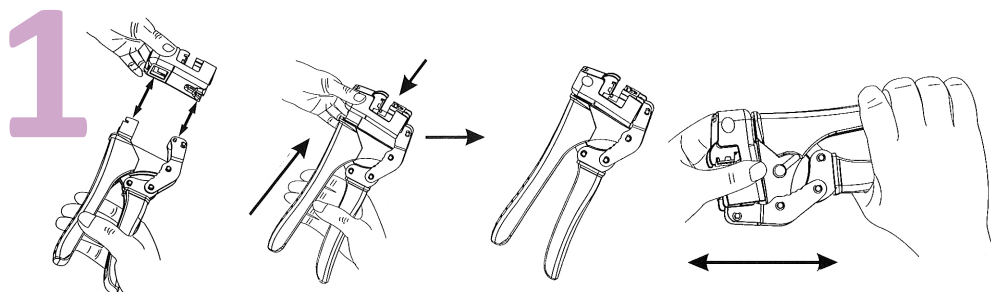


Guide slot



Tool body

Load	Items
1	Tool body.
1	180° module.
1	90° module.
1	Bag.

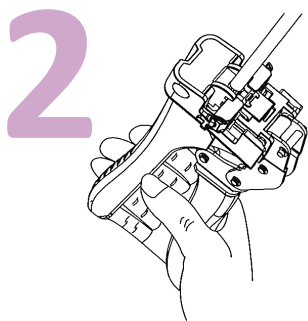


How to put modules:

Insert the guide slot of the die into the tool.

Press the button at both sides and fix the die securely.

Move forward the die and make sure it's completely fixed.



Install:

Install the wires, and place them securely into the insulation displacement terminals following the appropriate color code (T568A or T568B)

